

4Runner²⁰¹¹



Am I the 4Runner type? With its reinforced body-on-frame construction, Toyota 4Runner has always been the kind of SUV that's ready for rugged adventures. The kind planned on the fly, sparked by the promise of going bigger, steeper and farther: a weather report predicting six inches of fresh powder in the mountains, a fishing report that the largemouth are biting on a remote lake or a surf report calling for six-foot sets rolling toward a secluded cove. You get the idea. The question is, will you get with the idea? Are you in? With the 2011 4Runner, there's no question. **The 2011 Toyota 4Runner. Moving Forward.**

- 3** MODEL CHOICES
4RUNNER SR5
4RUNNER TRAIL
4RUNNER LIMITED



Every time you start off on a journey, whether it's a quiet weekend away or a quick trip around town, rest assured — we're with you every step of the way. For more than 50 years, Toyota engineering has created more than just durable vehicles. It's created enduring memories.



SR5 4x4 shown in Salsa Red Pearl.

Off road, what keeps 4Runner on track?

Trail's available Kinetic Dynamic Suspension System (KDSS). When pavement ends, priorities change. Which is why 4Runner puts serious off-road tools at your disposal. KDSS relaxes sway control for enhanced wheel articulation over deep ruts and off-camber obstacles. Yet even our most off-road-ready model — Trail — doesn't compromise on-road driving comfort and handling.

Hill Start Assist Control (HAC)¹

You're stopped during your climb up a hill. What can happen next is why 4Runner comes equipped with a feature called Hill Start Assist Control, or HAC. It helps prevent the vehicle from rolling backwards as the driver switches from the brake to the accelerator. HAC detects when the wheels roll backward and then gently applies the brakes, helping give the driver time to engage the accelerator.

Downhill Assist Control (DAC)¹

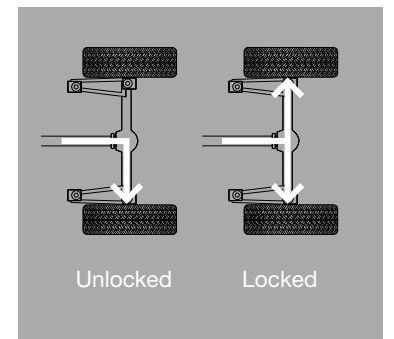
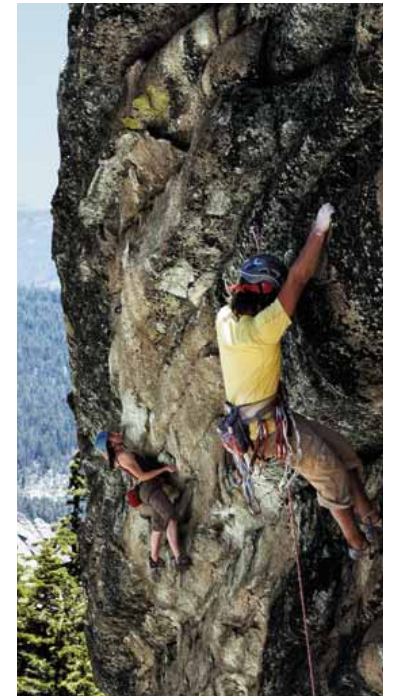
SR5 and Limited 4WD models come with an innovative feature called Downhill Assist Control, or DAC. Designed to help provide a controlled descent on steep inclines, it works by setting a target vehicle speed of approximately 2-4 mph. To help maintain that target speed, DAC sends a signal that automatically modulates 4Runner's powerful brakes.

Crawl Control²/Multi-terrain Select

For specific off-road conditions, Trail has two driver-selectable features. Need to traverse off-road obstacles using controlled-speed maneuvers? Engage Crawl Control. It modulates the electronic throttle and brakes to help maintain one of five set speeds. To enhance off-road performance and traction, Multi-terrain Select lets you choose from four terrain modes: "Mud and Sand," "Loose Rock," "Mogul" or "Rock."

Locking Rear Differential

Trail's locking rear differential does its best work when you're axle-deep in mud or on a moss-slicked boat ramp. Lock the rear differential and power is distributed evenly to both rear wheels, keeping them moving at the same speed, even when one wheel is off the ground. Or, if you're crawling over boulders, the locking rear differential's precise and predictable power output helps you move at a very controlled pace over precarious obstacles. Now, that's capability.



1. See footnote 4 in Disclaimers section. 2. See footnote 3 in Disclaimers section.



Trail shown in Classic Silver Metallic.

What does it feel like to drive a 4Runner?

It's a power trip. Its V6 engine uses Dual Independent Variable Valve Timing with intelligence (VVT-i) to give you 270 hp, 278 lb.-ft. of torque and an EPA-estimated 23 highway mpg rating¹. Put the power down and 4Runner's lineage to a tradition of tough, rugged, body-on-frame SUV engineering is obvious. On Limited, precise handling and a smooth ride are delivered using X-REAS, a sport suspension that automatically balances gas/hydraulic pressure between cross-linked shocks to further reduce body sway and pitch. From Limited's 20-inch split 6-spoke alloy wheels on up, it's a lean and mean sport utility that never feels utilitarian.



Limited 4x4 shown in Shoreline Blue Pearl with available accessory roof rail cross bars.

1. EPA-estimated mileage for 4Runner V6 4x2 models. Actual mileage will vary.

How's the view?

In a word, commanding. As the driver, you sit up high in the spacious cabin, your right foot firmly in charge of 4Runner's rugged capability, with the thick-rimmed steering wheel in your grip and large, easily legible dials in your gaze. You're surrounded by available technologies like voice-activated touch-screen DVD navigation¹; hands-free phone and music streaming via *Bluetooth*^{®2} wireless technology and an integrated backup camera³. Strength has seldom felt so rewarding.

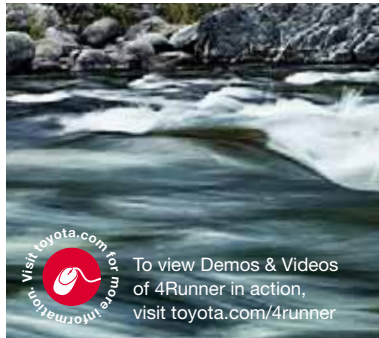


Limited 4x4 interior shown in Sand Beige with available voice-activated touch-screen DVD navigation system¹.

1. See footnote 11 in Disclaimers section. 2. See footnote 10 in Disclaimers section. 3. See footnote 12 in Disclaimers section.



What's so smart about **Smart Key System**?¹ With Limited you can unlock doors, **open or close the power sliding rear liftgate window** and even start the vehicle at the push of a button, even though your key is still in your pocket or bag.



Available front and rear **120V AC power outlets** give you juice on the go for powering up personal electronics. An available **USB² port with iPod^{®3} connectivity** adds to your musical possibilities.

4Runner's available **voice-activated touch-screen DVD navigation system**⁴ takes the guesswork out of venturing into the unknown. Map your whereabouts with the touch of a finger.

With Limited's **dual zone automatic climate control**, the driver can set one temperature setting while the front passenger can select a separate setting. **Rear ventilation and an air filtration system** add to the high level of interior comfort.



1. See footnote 11 in Disclaimers section. 2. See footnote 10 in Disclaimers section. 3. See footnote 12 in Disclaimers section. 4. See footnote 14 in Disclaimers section.

Genuine Toyota accessories let you outfit your 4Runner with the gear you need for the adventures you have in mind. **Cross bars, cargo covers, exhaust tips** and running boards are just some of what's available. And you can rest assured that they're all built to the same exacting standards as the 4Runner itself. (Some accessories may not be available in all regions of the country. See your Toyota dealer for details.)



Limited 4x4 interior shown in Sand Beige with available voice-activated touch-screen DVD navigation system¹ and 50/50 split fold-flat third-row seat.

1. See footnote 11 in Disclaimers section.

Will my life fit inside 4Runner?

Well, it is designed to be incredibly versatile. So no matter what your plans call for, get packed. 4Runner is ready when you are. The design of 4Runner's interior leaves plenty of room for you and your traveling companions. Slide into your seat and notice all the head room and hip room. And the wide space between the front seats ensures plenty of comfort where it counts.

Leather-trimmed interior

It's the choice for those who **want the very best of everything**. Standard on Limited and available on SR5 is a leather-trimmed interior, including an 8-way power-adjustable driver's seat with power lumbar support and 4-way power-adjustable front passenger seat. And both front seats are heated.

40/20/40 second-row seat

4Runner's versatile second-row seat lets you recline and relax. Or fold its 40/20/40 seat sections to **create various configurations of seating and storage** for passenger and cargo carrying.

Enhanced rear cargo area

The rear cargo area is available with a **sliding rear cargo deck** that can hold up to 440 lb². Liftgate lighting and a Party Mode switch optimize tailgate listening. Let the tailgate party begin.

Versed in versatility

4Runner's got an available sliding rear cargo deck that holds up to 440 lb² of gear. For quick access to the cargo area, there's a power sliding rear liftgate window. And your passengers enjoy a second row with seatbacks that recline.

LONGEVITY FACT: 4Runner is a true SUV, built using body-on-frame construction. The frame is fully boxed, and it's been reinforced at key stress points. So the rigors of towing up to 5000 lb.³ won't faze 4Runner. Or its driver.



1. See footnote 24 in Disclaimers section. 2. See footnote 5 in Disclaimers section. 3. Limited models only.

How many airbags come standard?

The 2011 4Runner comes standard with eight airbags! Toyota's rigorous crash testing has resulted in an occupant protection system that includes driver and front passenger airbags, driver and front passenger TAP (Thorax, Abdomen, Pelvis) seat-mounted side airbags, driver and front passenger and second-row (third-row airbags on models so equipped) Roll-Sensing side Curtain Airbags (RSCA), and driver and front passenger knee airbags.



Photo not intended to replicate actual inflated airbags.

SAFETY CONNECT^{®2,3}

Via Toyota's 24/7 call center, available Safety Connect[®] offers subscribers such helpful features as Automatic Collision Notification, Stolen Vehicle Location, Emergency Assistance Button (SOS) and Roadside Assistance. Safety Connect[®] offers the reliability of embedded cellular and GPS technology.



Standard on every 4Runner is the Star Safety System,[™] an integration of safety features that help assist drivers to avoid accidents in the first place. Vehicle Stability Control (VSC)⁴ helps prevent sideways slipping due to severe skidding while cornering. Traction Control (TRAC) employs throttle control to help reduce wheelspin and transfer torque to the wheel with the most traction. If the 4-wheel Anti-lock Brake System (ABS) senses an impending wheel lockup, it pulses the brakes rapidly, so wheels rotate rather than skid, giving the driver more control. Electronic Brake-force Distribution (EBD) optimizes the braking effort distributed between front and rear axles, while Brake Assist (BA)⁵ applies additional brake pressure if it detects a panic stop.



1. See footnote 19 in Disclaimers section. 2. See footnote 22 in Disclaimers section. 3. Limited models only. 4. See footnote 17 in Disclaimers section. 5. See footnote 18 in Disclaimers section.



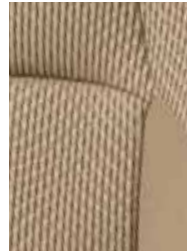
SR5 fabric in Graphite



SR5 fabric in Sand Beige



SR5 available sport fabric in Graphite



SR5 available sport fabric in Sand Beige



Trail water-resistant fabric in Graphite



SR5 available/Limited standard leather in Black



SR5 available/Limited standard leather in Sand Beige

Packages and Options

SR5

Premium Package — Leather-trimmed and heated 8-way power-adjustable driver's seat with power lumbar support; 4-way heated power-adjustable front passenger seat; leather-trimmed second-row seat, leather-trimmed steering wheel, courtesy lights, AM/FM CD player with MP3/WMA playback capability, eight speakers, XM® Radio¹ (includes 90-day trial subscription), USB² port with iPod®³ connectivity, hands-free phone capability and music streaming via *Bluetooth*®⁴ wireless technology

Convenience Package — Power tilt/slide moonroof with sunshade; one front and one cargo area 120V AC power outlet

Sliding rear cargo deck with under-floor storage box

Power tilt/slide moonroof with sunshade

Auto-dimming rearview mirror with integrated backup camera monitor⁵

AM/FM CD player with MP3/WMA playback capability, eight speakers, XM® Radio¹ (includes 90-day trial subscription), USB² port with iPod®³ connectivity, hands-free phone capability and music streaming via *Bluetooth*®⁴ wireless technology

One front and one cargo area 120V AC power outlet

Anti-theft system with engine immobilizer⁶

Sport fabric-trimmed 8-way power-adjustable driver's seat with power lumbar support; 4-way power-adjustable passenger seat

Fabric-trimmed 50/50 split fold-flat third-row seat and sliding second-row seat with passenger-side one-touch access to third-row seat

Leather-trimmed 50/50 split fold-flat third-row seat and sliding second-row seat with passenger-side one-touch access to third-row seat⁷

TRAIL

Voice-activated touch-screen DVD navigation system⁸ with integrated backup camera⁵; JBL® AM/FM 4-disc CD changer with MP3/WMA playback capability, 15 speakers including subwoofer, XM® Radio¹ with XM NavTraffic®⁹ (includes 90-day trial subscriptions), USB² port with iPod®³ connectivity, hands-free phone capability and music streaming via *Bluetooth*®⁴ wireless technology

Kinetic Dynamic Suspension System (KDSS)

LIMITED

Voice-activated touch-screen DVD navigation system⁸ with integrated backup camera⁵; JBL® AM/FM 4-disc CD changer with MP3/WMA playback capability, 15 speakers including subwoofer, XM® Radio¹ with XM NavTraffic®⁹ (includes 90-day trial subscriptions), USB² port with iPod®³ connectivity, hands-free phone capability and music streaming via *Bluetooth*®⁴ wireless technology

Leather-trimmed 50/50 split fold-flat third-row seat and sliding second-row seat with passenger-side one-touch access to third-row seat

Sliding rear cargo deck with under-floor storage box

WARRANTIES

Every Toyota Car, Truck and SUV is built to exceptional standards. And that's not idle boasting. We back it up with these Limited Warranty Coverages:

Basic: 36 months/36,000 miles (all components other than normal wear and maintenance items).

Powertrain: 60 months/60,000 miles (engine, transmission/transaxle, front-wheel drive, rear-wheel drive, seatbelts and airbags).

Rust-Through: 60 months/unlimited miles (corrosion perforation of sheet metal).

Emissions: Coverages vary under Federal and California regulations. Refer to applicable *Warranty and Maintenance Guide* for details.

Accessories: For Genuine Toyota accessories purchased at the time of the new vehicle purchase, the Toyota Accessory Warranty coverage is in effect for 36 months/36,000 miles from the vehicle's in-service date, which is the same coverage as the Toyota New Vehicle Limited Warranty.

For Genuine Toyota accessories purchased after the new vehicle purchase, the coverage is 12 months, regardless of mileage, from the date the accessory was installed on the vehicle, or the remainder of any applicable new vehicle warranty, whichever provides greater coverage, with the exception of car covers. Car covers are warranted for 12 months from the date of purchase and do not assume any coverage under the Toyota New Vehicle Limited Warranty.

You may be eligible for transportation assistance if it's necessary that your vehicle be kept overnight for repairs covered under warranty. Please see your authorized Toyota dealership for further details.

For complete details about Toyota's warranties, please visit www.toyota.com, refer to the applicable *Warranty and Maintenance Guide* or see your Toyota dealer.



BLACK
Black⁹ Graphite or Sand Beige⁹ interior



SHORELINE BLUE PEARL¹⁰
Black⁹ or Sand Beige⁹ interior



SALSA RED PEARL¹¹
Black⁹ Graphite or Sand Beige⁹ interior



MAGNETIC GRAY METALLIC
Black⁹ or Graphite interior



CLASSIC SILVER METALLIC
Black⁹ or Graphite interior



BLIZZARD PEARL^{9,12}
Black⁹ Graphite or Sand Beige⁹ interior

1. See footnote 7 in Disclaimers section. 2. See footnote 8 in Disclaimers section. 3. See footnote 9 in Disclaimers section. 4. See footnote 10 in Disclaimers section. 5. See footnote 12 in Disclaimers section. 6. See footnote 23 in Disclaimers section. 7. See footnote 13 in Disclaimers section. 8. See footnote 11 in Disclaimers section. 9. SR5 and Limited models only. 10. Trail and Limited models only. 11. SR5 and Trail models only. 12. Extra-cost color.

Features¹

EXTERIOR	SR5	TRAIL	LIMITED		SR5	TRAIL	LIMITED
Multi-reflector halogen headlamps with auto-off feature	S	S	–	Kinetic Dynamic Suspension System (KDSS)	–	O	–
Multi-reflector halogen headlamps with auto on/off feature	–	–	S	X-REAS Sport Enhancement Suspension	–	–	S
Integrated fog lamps	S	S	S	Skid plates: on engine, front suspension, radiator, fuel tank and transfer case (transfer case on 4x4 models only)	S	S	S
Color-keyed front and rear bumpers with chrome inserts, chrome door handles, color-keyed power heated outside mirrors with turn signal indicators and puddle lamps, overfenders, side rocker panels with chrome inserts, chrome-accented front grille insert, rear license plate garnish and chrome-painted roof rails with silver end caps	S	–	S	Power tilt/slide moonroof with sunshade	O/P	S	S
Black front and rear bumpers, door handles, power heated outside mirrors, overfenders, side rocker panels, mudguards, front grille insert and rear license plate garnish; hood scoop, smoked headlamp and taillamp bezels, and black utility roof	–	S	–	17-in. 6-spoke alloy wheels with P265/70R17 tires	S	–	–
Automatic Limited-Slip Differential (Auto LSD) (4x2 models only)	S	–	S	17-in. alloy wheels with P265/70R17 tires	–	S	–
Part-time 4WD system with Active Traction Control (A-TRAC)	O	S	–	20-in. split 6-spoke alloy wheels with P245/60R20 tires	–	–	S
Full-time 4WD system with Active Traction Control (A-TRAC) and Torsen ^{®2} limited-slip center differential with locking feature	–	–	O	Aerodynamic variable intermittent windshield wipers with mist cycle	S	S	S
Locking rear differential, Multi-terrain Select and Crawl Control ³	–	S	–	Privacy glass on rear side, quarter and rear liftgate windows	S	S	S
Downhill Assist Control (DAC) ⁴	O	–	O	Rear liftgate window defogger with timer and UV protection	S	S	S
				Color-keyed rear spoiler with LED center high-mount stop lamp and integrated concealed rear wiper with mist cycle	S	S	S
				Front and rear mudguards	–	S	–
				Integrated tow hitch receiver and wiring harness with 4- and 7-pin connectors ⁵	S	S	S
INTERIOR							
Air conditioning with air filter and second-row vents	S	S	–	Leather-trimmed 50/50 split fold-flat third-row seat and sliding second-row seat with passenger-side one-touch access to third-row seat	O ¹³	–	O
Dual zone automatic climate control with air filter and second-row vents	–	–	S	Tilt/telescopic steering wheel with cruise control	S	–	–
AM/FM CD player with MP3/WMA playback capability, eight speakers, XM compatible ⁶ (additional hardware and subscription required)	S	–	–	Tilt/telescopic steering wheel with cruise control, audio and Bluetooth ^{®10} hands-free phone controls	O/P	S	–
AM/FM CD player with MP3/WMA playback capability, eight speakers, XM [®] Radio ⁷ (includes 90-day trial subscription), USB ⁸ port with iPod ^{®9} connectivity, hands-free phone capability and music streaming via Bluetooth ^{®10} wireless technology	O/P	S	–	Leather-trimmed tilt/telescopic steering wheel with cruise control, audio and Bluetooth ^{®10} hands-free phone controls	P	–	S
JBL [®] AM/FM 6-disc CD changer with MP3/WMA playback capability, 15 speakers including subwoofer, XM [®] Radio ⁷ (includes 90-day trial subscription), USB ⁸ port with iPod ^{®9} connectivity, hands-free phone capability and music streaming via Bluetooth ^{®10} wireless technology	–	–	S	Analog instrumentation with orange-illuminated speedometer, tachometer, coolant temperature and fuel gauges; ECO driving indicator, LCD odometer, twin tripmeters and average fuel consumption	S	–	–
Voice-activated touch-screen DVD navigation system ¹¹ with integrated backup camera, ¹² JBL [®] AM/FM 4-disc CD changer with MP3/WMA playback capability, 15 speakers including subwoofer, XM [®] Radio ⁷ with XM NavTraffic ^{®11} (includes 90-day trial subscriptions), USB ⁸ port with iPod ^{®9} connectivity, hands-free phone capability and music streaming via Bluetooth ^{®10} wireless technology	–	O	O	Optitron instrumentation with illuminated speedometer, tachometer, coolant temperature and fuel gauges; ECO driving indicator, odometer, twin tripmeters and average fuel consumption	–	S	S
Auxiliary audio jack	S	S	S	In-key remote keyless entry system	S	S	–
Multi-Information Display with outside temperature, clock, average fuel consumption, distance to empty and compass	S	S	S	Smart Key System ¹⁴ with Push Button Start and remote illuminated entry	–	–	S
Fabric-trimmed 6-way adjustable driver's seat with power lumbar support; 4-way adjustable front passenger seat	–	–	S	Power windows with auto up/down and jam protection in all positions	S	S	S
Fabric-trimmed 40/20/40 split, sliding, reclining, fold-flat second-row seat with one-touch access to third-row seat	S	–	–	Power sliding rear liftgate window with auto up/down and jam protection	S	S	S
Sport fabric-trimmed 8-way power-adjustable driver's seat with power lumbar support; 4-way power-adjustable front passenger seat	O	–	–	Power door locks with programmable auto door lock logic	S	S	S
Water-resistant fabric-trimmed 8-way power-adjustable driver's seat with power lumbar support; 4-way power-adjustable front passenger seat	–	S	–	Auto-dimming rearview mirror with integrated backup camera monitor ¹²	O	S ¹⁵	S ¹⁵
Leather-trimmed and heated 8-way power-adjustable driver's seat with power lumbar support; 4-way heated power-adjustable front passenger seat	P	–	S	HomeLink ^{®16} universal transceiver	S	S	S
Fabric-trimmed 40/20/40 split reclining and fold-flat second-row seat	S	S	–	Overhead console with Multi-terrain Select, Active Traction Control (A-TRAC), Vehicle Stability Control (VSC) ¹⁷ cutoff, locking rear differential and Crawl Control ³ switches	–	S	–
Leather-trimmed 40/20/40 split reclining and fold-flat second-row seat	P	–	S	Center-console storage box with coin, tissue and pen holders	S	S	S
Second-row seat center armrest with cup holders	S	S	S	Sliding rear cargo deck with under-floor storage box	O	S	O
Fabric-trimmed 50/50 split fold-flat third-row seat and sliding second-row seat with passenger-side one-touch access to third-row seat	O	–	–	Two front and one cargo area 12V auxiliary power outlets	S	S	S
				One front and one cargo area 120V AC power outlet	O/P	S	S
				Ten (12 on three-row models) cup and bottle holders	S	S	S
				Gated shift lever with sequential shift mode	S	S	S
				Dual sun visors with illuminated vanity mirrors	S	S	S

S = Standard O = Optional – = Not Available P = Feature is available as part of an option package.

See numbered footnotes in Disclaimers section.

Features (continued)

SAFETY AND CONVENIENCE

	SR5	TRAIL	LIMITED		SR5	TRAIL	LIMITED
STAR SAFETY SYSTEM ™ Star Safety System™ — includes Vehicle Stability Control (VSC); ¹⁷ Traction Control (TRAC), Anti-lock Brake System (ABS), Electronic Brake-force Distribution (EBD) and Brake Assist (BA) ¹⁸	S	S	S	LATCH (Lower Anchors and Tethers for CHildren) includes lower anchors on outboard second-row seats and tether anchors on all second-row seats	S	S	S
Driver and front passenger Advanced Airbag System ¹⁹	S	S	S	Child-protector rear door locks and power window lockout	S	S	S
Driver and front passenger TAP (Thorax, Abdomen, Pelvis) front seat-mounted side airbags and front and all-row (third-row airbags on models so equipped) Roll-Sensing side Curtain Airbags (RSCA) ¹⁹ with cutoff switch	S	S	S	Side-impact door beams	S	S	S
Driver and front passenger knee airbags ¹⁹	S	S	S	Tire Pressure Monitor System (TPMS) ²¹	S	S	S
Driver and front passenger active headrests ²⁰	S	S	S	Daytime Running Lights (DRL) with on/off feature	S	S	S
Driver and front passenger seatbelt pretensioners with force limiters	S	S	S	Safety Connect ^{®22} — includes Emergency Assistance, Stolen Vehicle Locator, Roadside Assistance and Automatic Collision Notification. Available by subscription. Complimentary 1-year trial subscription.	—	—	S
3-point seatbelts for all seating positions; driver-side Emergency Locking Retractor (ELR) and Automatic/Emergency Locking Retractors (ALR/ELR) on all passenger belts	S	S	S	Rear parking assist sonar	S	—	—
				Engine immobilizer ²³	S	—	—
				Anti-theft system with engine immobilizer ²³	O	S	S

S = Standard O = Optional -- = Not Available P = Feature is available as part of an option package.

Specifications

MECHANICAL AND PERFORMANCE

	SR5	TRAIL	LIMITED
Engine 4.0-Liter DOHC 24-Valve V6 with Dual Independent Variable Valve Timing with intelligence (VVT-i); 270 hp @ 5600 rpm; 278 lb.-ft. @ 4400 rpm	Standard	Standard	Standard
Emission rating	Low Emission Vehicle II (LEV-II)		
Ignition	Electronic, with Toyota Direct Ignition (TDI)		
Transmission	5-speed Electronically Controlled automatic Transmission with intelligence (ECT-i) and sequential shift mode		
Body construction	Reinforced body-on-frame construction		
Suspension	Coil-spring independent double-wishbone front suspension with stabilizer bar; coil-spring 4-link with lateral rod rear suspension with stabilizer bar		
Steering	Engine speed-sensing Variable Flow Control (VFC) power-assisted rack-and-pinion		
Turning circle diameter, curb to curb (ft.)	37.4	37.4	37.4
Brakes	Power-assisted 4-wheel ventilated disc brakes with Anti-lock Brake System (ABS) (Multi-terrain ABS on Trail), Electronic Brake-force Distribution (EBD) and Brake Assist (BA) ¹⁸		

EXTERIOR DIMENSIONS (in.)

	SR5	TRAIL	LIMITED
Overall height	71.5	74.2	71.5
Overall width	75.8	75.8	75.8
Overall length	189.9	189.9	189.9
Wheelbase	109.8	109.8	109.8
Track (front/rear)	63.2/63.2	63.2/63.2	63.2/63.2

INTERIOR DIMENSIONS (front/second-row/third-row seats) (in.)

	SR5	TRAIL	LIMITED
Head room	39.3/38.6/34.3	NA	NA
Head room with moonroof	38.6/38.6/34.3	38.6/38.6/—	38.6/38.6/34.3
Shoulder room	57.8/57.8/57.7	57.8/57.8/—	57.8/57.8/57.7
Hip room	56.5/55.7/43.3	56.5/55.7/—	56.5/55.7/43.3
Leg room	41.7/32.9/29.3	41.7/32.9/—	41.7/32.9/29.3
Seating capacity (standard/with available third-row seat)	5/7	5	5/7

OFF-HIGHWAY

	SR5	TRAIL	LIMITED
Approach/departure angle (degrees) (4x2, 4x4)	24/24 25/24	33/26	24/24 25/24
Ground clearance (in.) (4x2, 4x4)	9.0/9.6	9.6	9.0/9.6

WEIGHTS AND CAPACITIES

	SR5	TRAIL	LIMITED
Curb weight (lb.) (4x2, 4x4)	4400/4675	4750	4525/4805
Gross Vehicle Weight Rating (GVWR) (lb.) (4x2, 4x4)	6100/6300	6300	6100/6300
Towing capacity (lb.) ⁵	5000	5000	5000
Cargo volume (cu. ft.) ²⁴			
behind front/rear seats	89.7/47.2	NA	89.7/47.2
behind front/rear seats (with sliding deck)	88.8/46.3	88.8/46.3	88.8/46.3
behind front/second-row/third-row seats	88.8/46.3/9.0	NA	88.8/46.3/9.0
Fuel tank (gal.)	23	23	23

See numbered footnotes in Disclaimers section.

Specifications (continued)

TIRES

Size; P265/70R17/ P245/60R20	Standard/ NA	Standard/ NA	NA/ Standard
Type; Mud-and-Snow	Standard	Standard	Standard
Spare; Full-size, mounted under body	Standard	Standard	Standard
MILEAGE ESTIMATES (mpg city/highway)²⁵			
4x2	17/23/19	NA	17/23/19
4x4	17/22/19	17/22/19	17/22/19

DISCLAIMERS

1. Toyota strives to build vehicles to match customer interest and thus they typically are built with popular options and option packages. Not all options/packages are available separately and some may not be available in all regions of the country. See toyota.com for information about options/packages commonly available in your area. If you would prefer a vehicle without any or with different options, contact your dealer to check for current availability or the possibility of placing a special order. 2. Torsen® is a registered trademark of Zexel Torsen, Inc. 3. The Toyota 4Runner is designed to meet most off-road driving requirements, but off-roading is inherently dangerous. Abusive use may result in bodily harm or vehicle damage. Toyota encourages responsible operation to protect you, your vehicle and the environment. Seatbelts should be worn at all times. 4. Downhill Assist Control (DAC) is designed to help the driver maintain vehicle control and speed on steep, downhill descents. Hill Start Assist Control (HAC) is designed to help minimize backward rolling on steep ascents. Neither system is a substitute for safe driving judgment and practices. Factors including speed, grade, surface conditions and driver input can all affect whether DAC and HAC will be effective in preventing a loss of control. Please see your *Owner's Manual* for further details. 5. Before towing, confirm your vehicle and trailer are compatible, hooked up and loaded properly and that you have any necessary additional equipment. Do not exceed any Weight Ratings and follow all instructions in your *Owner's Manual*. The maximum you can tow depends on the total weight of any cargo, occupants and available equipment. Calculated with new SAE J2807 method. 6. Functioning XM® Radio requires a compatible receiver and monthly service fee. See your Toyota dealer for further details. Reception of the satellite signal may vary depending on location. All fees and programming subject to change. Subscriptions subject to the terms and conditions available at www.xmradio.com. Available only in the 48 contiguous United States. 7. Satellite radio requires an XM® monthly service fee. See your Toyota dealer for further details. Reception of the satellite signal may vary depending on location. All fees and programming subject to the terms and conditions available at www.xmradio.com. Available only in the 48 contiguous United States. 8. May not be compatible with all MP3/WMA players and like models. 9. iPod® is a registered trademark of Apple, Inc. All rights reserved. 10. The Bluetooth® word mark and logos are registered trademarks owned by Bluetooth SIG, Inc. and any use of such marks by Toyota is under license. Other trademarks and trade names are those of their respective owners. The Bluetooth® wireless technology phones listed on toyota.com have been tested for compatibility with Toyota vehicles. Performance will vary based on phone software version, coverage and your wireless carrier. Phones are warranted by their manufacturer, not Toyota. 11. The navigation system is designed to assist in locating an address or point of interest. XM NavTraffic® requires a monthly service fee and hardware and is designed to provide real-time traffic or alternative routes of travel. Discrepancies may be encountered between the system and your actual location. Road system changes may affect the accuracy of the information provided. Rely on your common sense to decide whether to follow a specified route. Detailed coverage not available in every city or roadway. Periodic navigation updates available at an additional cost. See your *Navigation System Owner's Manual* for further details. 12. The backup camera does not provide a comprehensive view of the rear area of the vehicle. You should also look around outside your vehicle and use your mirrors to confirm rearward clearance. Cold weather will limit effectiveness and view may become cloudy. 13. Requires Premium Package. 14. The Smart Key System may interfere with some pacemakers or cardiac defibrillators. If you have one of these medical devices, please talk to your doctor to see if you should deactivate this system. 15. The backup camera uses the navigation system display on vehicles so equipped. 16. HomeLink® is a registered trademark of Johnson Controls, Inc. 17. Vehicle Stability Control (VSC) is an electronic system designed to help the driver maintain vehicle control under adverse conditions. It is not a substitute for safe driving practices. Factors including speed, road conditions and driver steering input can all affect whether VSC will be effective in preventing a loss of control. Please see your *Owner's Manual* for further details. 18. Brake Assist is designed to help the driver take full advantage of the benefits of ABS. It is not a substitute for safe driving practices. Braking effectiveness also depends on proper brake-system maintenance and tire and road conditions. 19. All the airbag (AB) systems are Supplemental Restraint Systems. All ABs (if installed) are designed to inflate only under certain conditions and in certain types of severe collisions: frontal and knee ABs typically inflate in frontal collisions; side and side curtain ABs in side collisions; Roll-Sensing Curtain ABs at a severe tilt degree, roll or lateral G-force. In all other accidents, the ABs will not inflate. To decrease the risk of injury from an inflating AB, always wear seatbelts, sit upright in the middle of the seat as far back as possible and do not lean against the door. Do not put objects in front of an AB or around the seatback. Do not use a rearward-facing child seat in any front passenger seat. The force of an inflating AB may cause serious injury or death. See your *Owner's Manual* for further information/warnings. 20. Active headrests can help reduce the extent of whiplash in certain types of rear-end collisions. 21. The Toyota Tire Pressure Monitor alerts the driver when tire pressure is critically low. For optimal tire wear and performance, tire pressure should be checked regularly with a gauge; do not rely solely on the monitor system. See your *Owner's Manual* for details. 22. Available on select 2011 Toyota models. Contact with the Safety Connect® response center is dependent upon the telematics device being in operative condition, cellular connection availability, navigation map data and GPS satellite signal reception, which can limit the ability to reach the response center or receive emergency service support. Enrollment and Telematics Subscription Service Agreement required. One-year trial subscription available only with new vehicle purchase of Safety Connect®-equipped vehicles. Additional subscription terms available; charges vary by subscription term selected. 23. The engine immobilizer is a state-of-the-art anti-theft system. When you insert your key into the ignition switch or bring a Smart Key fob into the vehicle, the key transmits an electronic code to the vehicle. The engine will only start if the code in the transponder chip inside the key or Smart Key fob matches the code in the vehicle's immobilizer. Because the transponder chip is embedded in the key or Smart Key fob, it can be costly to replace. If you lose a key or Smart Key fob, your Toyota dealer can help. Alternatively, you can find a qualified independent locksmith to perform high-security key services by consulting your local Yellow Pages or by contacting www.aloa.org. 24. Cargo and load capacity limited by weight and distribution. 25. 2011 EPA-estimated mileage. Actual mileage will vary.

Toyota 4Runner is designed to meet most off-road driving requirements. Abusive use may result in bodily harm or damage. Toyota encourages responsible operation to protect you, your vehicle and the environment. Seatbelts should be worn at all times. Please do not allow passengers to ride in the cargo area. Towing hitch receivers/ball mount kits are not intended to provide crash protection.

For details on vehicle specifications, standard features and available equipment in your area, contact your Toyota dealer. A vehicle with particular equipment may not be available at the dealership. Ask your Toyota dealer to help locate a specifically equipped vehicle.

All information presented herein is based on data available at the time of printing, is subject to change without notice and pertains specifically to mainland U.S.A. vehicles only. Prototypes shown. Actual production vehicles may vary.



For Toyota Mobility program details, go to www.toyota.com/mobility or call the Toyota Customer Assistance Center at 1-800-331-4331

